

18-20
APRIL
2023



WELDING

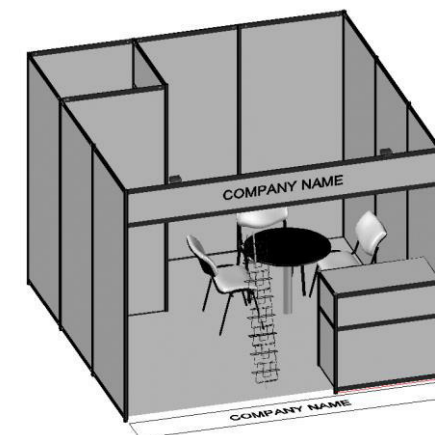
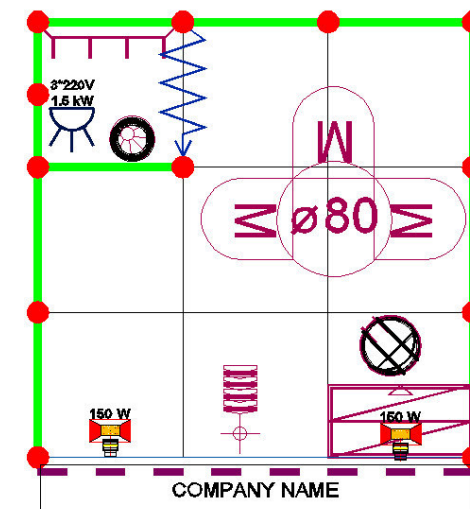
THE 21ST INTERNATIONAL EXHIBITION

WELDING.EXPOFORUM.RU

Standard booth 9 m2

Standard booth 9 m2(for CMES)		
Name	Unit of dims.	Quantity
Construction of a standard exhibition unit (includes the following positions: carpeting; wall element 100*250 h; wall element 50*250 h; inbuilt fascia panel h=33; vertical post. 3*3, connecting bearer)	m2	9
Provision of a source with a capacity up to 3 kW	pc	1
Ordinary socket connector, 220 V, up to 1.5 kW, SCHUKO European Standard, in the non-equipped exhibition space	pc	1
LED luminaire 20 W	pc	2
Waste paper basket	pc	1
Glass table, D=80*75 h	pc	1
Soft chair 53 w * 53 (ISO/fabric/chromed legs)	pc	3
Fascia panel inscription, 1 letter	pc	10
Information / Bar counter 50*100*110h	pc	1
Bar stool 35*35*82 h	pc	1
Floor-standing leaflet stand 8A4	pc	1
Wall element 100*250h	pc	1
Sliding doors with lock 100*200 h	pc	1
Clothes rack	pc	1
Total price (including space rent fee and registration fee):		€2 909,45

*covering stand walls is not included in price and should be paid additionally





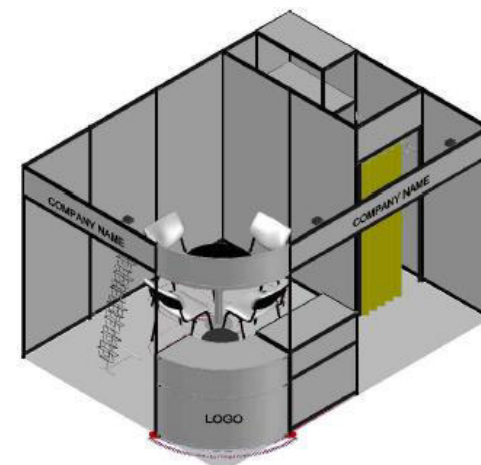
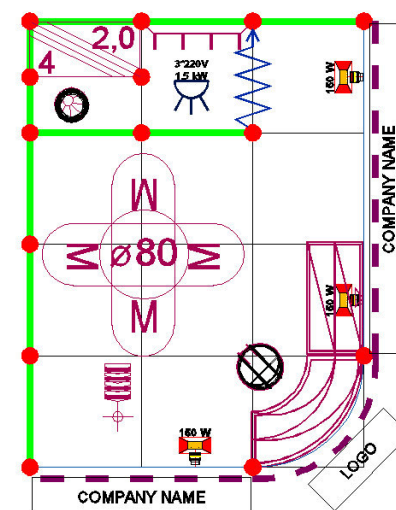
WELDING

THE 21ST INTERNATIONAL EXHIBITION

WELDING.EXPOFORUM.RU

Standard booth 12 m2

Standard booth 12 (for CMES)		
Name	Unit of dimens.	Quantity
Construction of a standard exhibition uni (includes the following positions: carpeting; wall element 100*250 h; wall element 50*250 h; inbuilt fascia panel h=33; vertical post. 3*3, connecting bearer)	m2	12
Provision of a source with a capacity up to 3 kW	pc	1
Ordinary socket connector, 220 V, up to 1.5 kW, SCHUKO European Standard, in the non-equipped exhibition space	pc	1
LED luminaire 20 W	pc	3
Waste paper basket	pc	1
Glass table, D=80*75 h	pc	1
Soft chair 53 w * 53 (ISO/fabric/chromed legs)	pc	4
Fascia panel inscription, 1 letter	pc	20
Information / Bar counter 50*100*110h	pc	1
Information / Bar counter (1/4 R ext.=100; 1/4 r int.=50)*110h	pc	1
Logo for the bar counter	pc	1
Bar stool 35*35*82 h	pc	1
Inbuilt storage rack 50 * 100 * 250 h (4 shelves)	pc	1
Floor-standing leaflet stand 8A4	pc	1
Wall element 100*250h	pc	1
Wall element 50*250 h	pc	2
Sliding doors with lock 100*200 h	pc	1
Clothes rack	pc	1
Total price (including space rent fee and registration fee):		€4 183,87



*covering stand walls is not included in price and should be paid additionally